

Drawing No.	Rev.	Page
NHL-3FB1U-W18	G	1 / 7

SPECIFICATIONS

Product Name: Network Monitor Signal Tower

Model: NHL-3FB1□-RYG

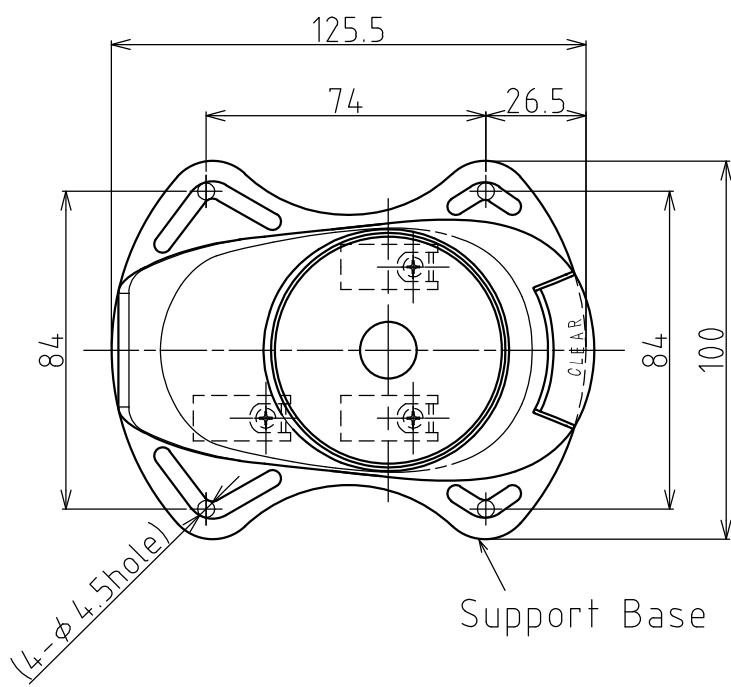
PATLITE Corporation

Drawing No.	Rev.	Page
NHL-3FB1U-W18	G	2 / 7

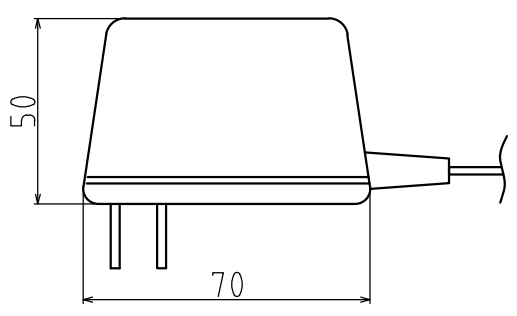
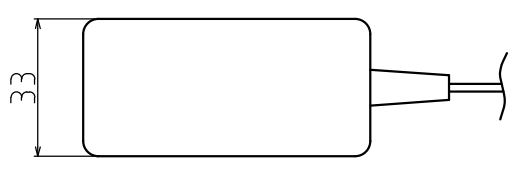
1. General Specifications

Model	NHL-3FB1U-RYG	NHL-3FB1N-RYG
UL registration model	NHL-3FB1U-RYG	NHL-3FB1N-RYG *1
Rated Voltage	24VDC (Main Unit)	
AC Adaptor	Input: 100VAC - 240VAC (50/60Hz) Output: 24VDC	
Operating Voltage Range	Rated Voltage $\pm 10\%$	
Inrush Current	AC adaptor (at full load) 30A (100V AC), 60A (230V AC)	23A (24V DC)
Rated Power Consumption	Main Unit	Standby : 2.0W Maximum : 4.0W (with AC Adaptor, 100VAC input)
	Red	1.0 W
	Amber	1.0 W
	Green	0.8 W
Operating Ambient Temperature	0°C ~ + 40°C	
Operating Ambient Humidity	20% - + 80% RH (No Dew or Condensation)	
Storage Ambient Temperature	- 10 °C ~ + 60°C	
Storage Ambient Humidity	20% - + 80% RH (No Dew or Condensation)	
Mounting Location	Indoor Only	
Mounting Direction	Upright	
Protection Rating	IP 20	
Vibration Resistance	19.6m/s ²	
Insulation Resistance	More than 1MΩ at 500VDC between live part and non-current carrying metallic part.	
Withstand Voltage	1000VAC (10mA or less) applied for 1 min between live part and non-current carrying metallic part without breaking insulation.	
Luminous Intensity	Red : 960mcd or more Amber: 900mcd or more Green : 1070mcd or more	
Mass (Tolerance $\pm 10\%$) (AC Adaptor not include)	800 g	
Outer Dimensions	Refer to the Outer Dimension Drawing	
Sound Pressure Level	High: 80dB or more Low: 70dB or less (at 25°C)	
Environmental Condition	Front direction from the center, at 1m, with 'A' weighting.	
Communication Method (LAN)	Ethernet (Conforms to IEEE 802.3) 10BASE-T / 100BASE-TX (Auto negotiation, Full Duplex / Half Duplex)	
Operating portion	"Volume" Switch, "Reset" Switch, "Clear" Switch, "Test" Switch	
Accessories	AC Adaptor *2, Quick-start Operation Manual, Rubber feet (4 pcs.), Adhesive seal, Support Base, Screws (3 pcs.)	
Option	Wall Bracket (NH-WST), Partition Mount Bracket (NH-PST)	
Conformity Standards	RoHS Directive (EN 50581) EMC Directive (EN 55032, EN 55024) FCC Part 15 Subpart B Class B UL Listed (File No.24210) KC mark (Korea Certification mark) *3	
Remark	Conforms to the CE Requirements *1 When using AC adaptor is required to conform to the standard. AC adaptor output current : 1A max *2 Only U type. *3 Only N type.	

1	2		3		4	
A 指定 公差 General tolerance	角度公差 Angular tolerance ±[°]		寸法公差 Dimensional tolerance ±[mm]			図番 Drawing No.
	短辺長さ Length of short side					NHL-3FB1U-W18
	ページ Page					7 / 7
	精 f		改訂 Rev.			年月日 Date
中 m		改訂履歴 Revisions				
粗 v		△G				



Support plate (Accessory)
Mounting Dimensions
(Reference Diagram)



AC Adaptor (Accessory)
(Reference Diagram)

番号 No.	部品名 Part Name	数量 Qty.	記事 Remarks		
機種 Model	特注No. S.P.No.	-	図名 Name	Outer Dimensions Drawing	
品目コード Part No.	尺度 Scale	三角法 3rd Angle P.	単位 Unit mm	株式会社 パトライト PATLITE Corporation	